

## Section 1: Demographic Analysis



## Section 1

### Demographic Analysis

An analysis of the population or demographic characteristics of the region will aid in the understanding of the community and the citizens who reside within the community. This analysis will cover a variety of topics including population growth or decline, density, age structure, gender, race, education, marital status, employment, income, housing change, age of housing, housing types, housing occupancy and households.

#### Population Growth 1850-2000

Table 1-1 and Charts 1-1 through 1-4 are provided to show individual municipal and county statistics on population growth. The 2000 populations in the region range from 927 in North Towanda Township to 3,024 in Towanda Borough. The Towanda Township population for 2000 was 1,131. Some trends observed from the data include:

##### **North Towanda Township**

- The Township experienced four decades of decline (1890-1930) followed by five decades of strong growth (1940-1980).
- The Township's highest population, 1,003 residents, was reached in 1980. A net loss of 76 residents has occurred since 1980.

##### **Towanda Borough**

- The Borough's population peak occurred in 1900 at 4,663 residents
- The population was relatively stable up until 1970 (4,224 residents). A decline of 1,200 residents has occurred over the last three decades.
- The last half of the 19<sup>th</sup> century was a major boom time for Towanda. The population grew from 1,171 to 4,663.

##### **Towanda Township**

- The 45% decline incurred by the Township from 1850 to 1860 was a result of the split off of North Towanda Township.
- The Township has experienced two population peaks, 1,142 in 1890 and 1,269 in 1980.
- A net loss of 138 residents has occurred since 1980.

##### **Bradford County**

- The population curve for the County is very similar to North Towanda and Towanda Townships, showing a peak of 59,403 residents at 1900, several decades of population decline, followed by generally consistent growth since 1940.
- Also similar to the Townships, the decade 1980-1990 resulted in a population loss followed by a nearly equal gain from 1990-2000.

Table 1-1 Population Census 1850-2000

For Central Bradford County Municipalities and Bradford County

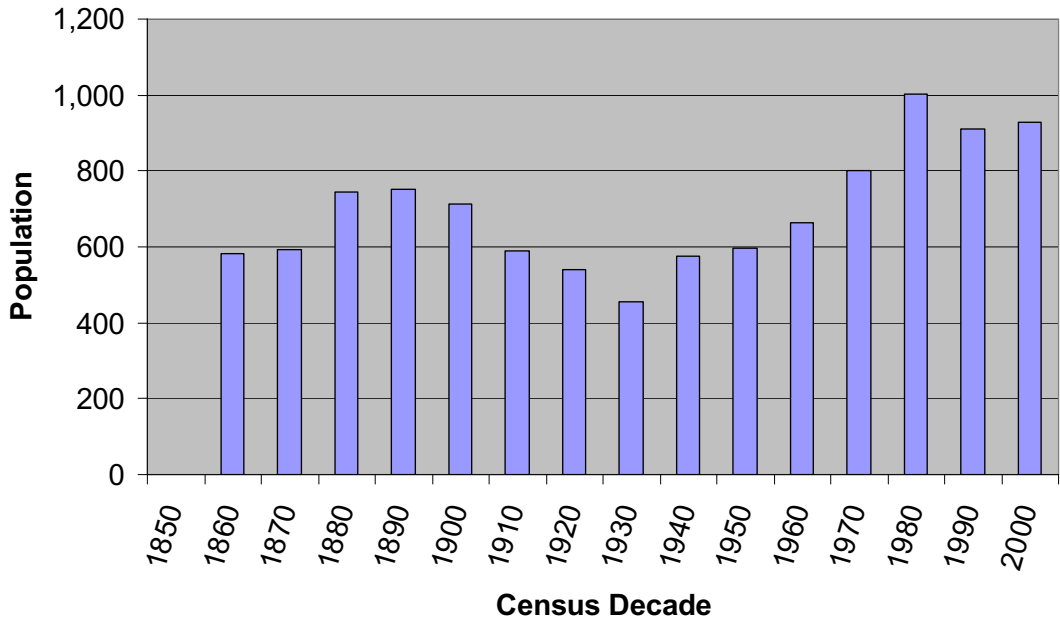
Source: U.S. Census Bureau

North Towanda Township				Towanda Borough			
Year	Population	Previous Decade		Year	Population	Previous Decade	
		Numerical Change	Percentage Change			Numerical Change	Percentage Change
2000	927	18	2.0%	2000	3,024	-218	-6.7%
1990	909	-94	-9.4%	1990	3,242	-284	-8.1%
1980	1,003	202	25.2%	1980	3,526	-698	-16.5%
1970	801	137	20.6%	1970	4,224	-69	-1.6%
1960	664	66	11.0%	1960	4,293	224	5.5%
1950	598	24	4.2%	1950	4,069	-85	-2.0%
1940	574	119	26.2%	1940	4,154	50	1.2%
1930	455	-84	-15.6%	1930	4,104	-165	-3.9%
1920	539	-52	-8.8%	1920	4,269	-12	-0.3%
1910	591	-123	-17.2%	1910	4,281	-382	-8.2%
1900	714	-39	-5.2%	1900	4,663	494	11.8%
1890	753	7	0.9%	1890	4,169	355	9.3%
1880	746	154	26.0%	1880	3,814	1,118	41.5%
1870	592	10	1.7%	1870	2,696	1,074	66.2%
1860	582			1860	1,622	451	38.5%
1850				1850	1,171		

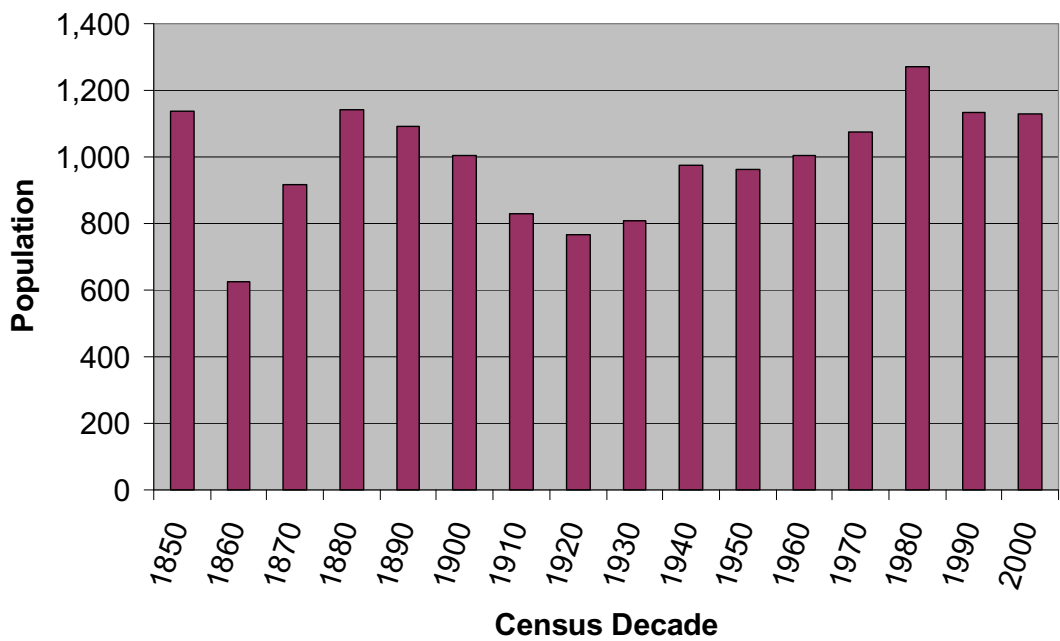
Towanda Township			
Year	Population	Previous Decade	
		Numerical Change	Percentage Change
2000	1,131	-2	-0.2%
1990	1,133	-136	-10.7%
1980	1,269	194	18.0%
1970	1,075	69	6.9%
1960	1,006	42	4.4%
1950	964	-10	-1.0%
1940	974	164	20.2%
1930	810	44	5.7%
1920	766	-62	-7.5%
1910	828	-178	-17.7%
1900	1,006	-85	-7.8%
1890	1,091	-51	-4.5%
1880	1,142	226	24.7%
1870	916	290	46.3%
1860	626	-512	-45.0%
1850	1,138		

Bradford County			
Year	Population	Previous Decade	
		Numerical Change	Percentage Change
2000	62,761	1,794	2.9%
1990	60,967	-1,952	-3.1%
1980	62,919	4,957	8.6%
1970	57,962	3,037	5.5%
1960	54,925	3,203	6.2%
1950	51,722	1,107	2.2%
1940	50,615	1,576	3.2%
1930	49,039	-4,127	-7.8%
1920	53,166	-1,360	-2.5%
1910	54,526	-4,877	-8.2%
1900	59,403	170	0.3%
1890	59,233	692	1.2%
1880	58,541	5,337	10.0%
1870	53,204	4,470	9.2%
1860	48,734	5,903	13.8%
1850	42,831	10,062	30.7%

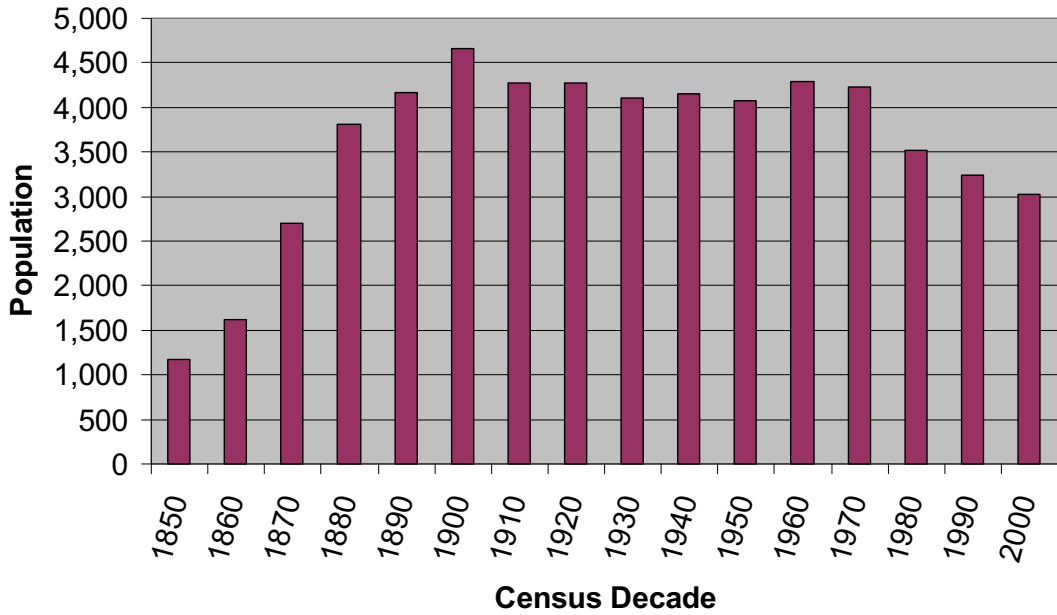
**Chart 1-1 North Towanda Township Population  
1850-2000**



**Chart 1-2 Towanda Township Population 1850-  
2000**



**Chart 1-3 Towanda Borough Population 1850-2000**



**Chart 1-4 Bradford County Population 1850-2000**

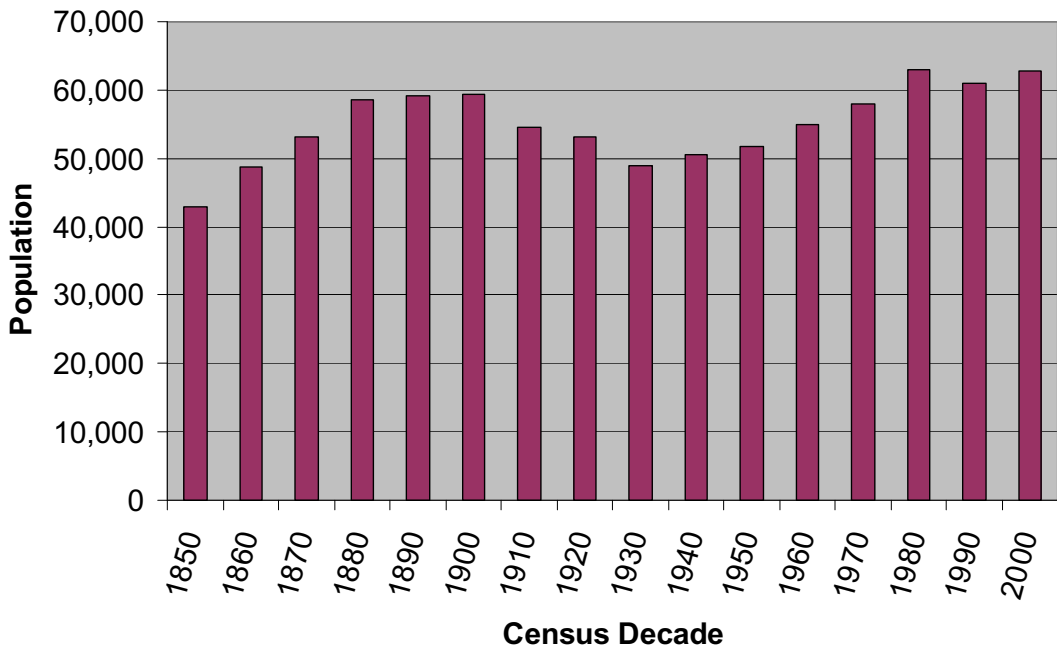


Table 1-2 – Population Change 1950-2000 and Projection 2010-2050

For Central Bradford County Municipalities and Bradford County

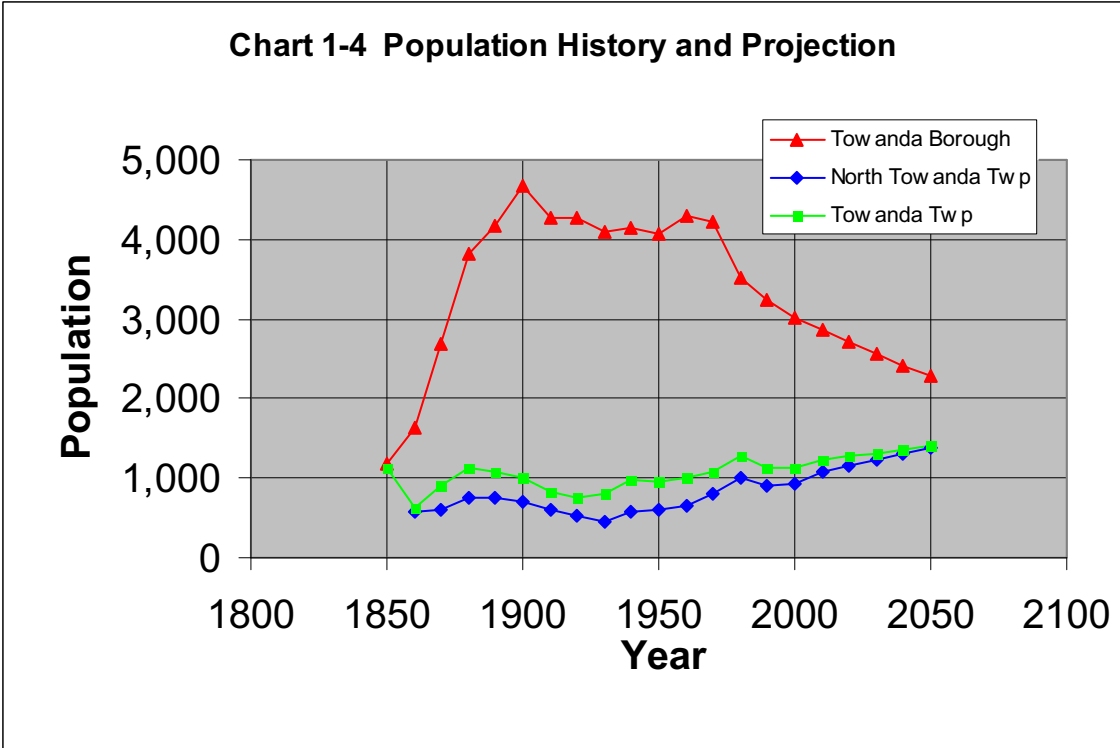
Source: U.S. Census Bureau, Cummings & Smith, Inc. and Bradford County Planning Commission

Municipality	Population						Projection (Linear Regression Method)				
	1950	1960	1970	1980	1990	2000	2010	2020	2030	2040	2050
N.Towanda Twp.	598	664	801	1,003	909	927	1,075	1,149	1,223	1,297	1,370
			Projection by BCPC				943	959			
Towanda Boro.	4,069	4,293	4,224	3,526	3,242	3,024	2,858	2,702	2,554	2,414	2,281
			Projection by BCPC				2,796	2,562			
Towanda Twp.	964	1,006	1,075	1,269	1,133	1,131	1,237	1,278	1,318	1,358	1,398
			Projection by BCPC				1,126	1,119			
Bradford County	51,722	54,925	57,962	62,919	60,967	62,761	66,370	68,607	70,843	73,080	75,317
			Projection by BCPC				64,545	66,428			

The 1950-2000 census data is the basis for the populations projections for 2010 to 2050 presented in Table 1-2 above. A mathematical projection called Linear Regression was used to prepare the municipal projections, except that an alternate methodology called exponential direct was deemed more appropriate for the Borough. Linear Regression is a straight line projection model utilizing past trends in population change with corrections made based on deviations from the straight line. The projections suggest that with the exception of the Borough positive future growth will be experienced. The predicted increases or decreases from 2000 to 2050 are N. Towanda Township (+443), Towanda Borough (-743), Towanda Township (+267) and Bradford County (+12,556). Chart 1-4 is included to show this data in line chart format.

The Bradford County Planning Commission has recently prepared projections for 2005 through 2020 which are presented in Table 1-2 for comparison. With the exception of Towanda Borough the County projections are more conservative, possibly because they are based on a shorter historical period. Users of this information are cautioned that population projections are a mathematical exercise based on past trends and can not account for external factors which could influence future population changes.

Table 1-3 below shows the growth rates (percentage change in population) for census decades since 1950. The changes are mixed ranging from a 25% loss in Towanda Borough to a 55% gain in North Towanda Township from 1950 to 2000. This rate of growth is significantly higher than for Bradford County overall. The fifty year growth rates for Towanda Township and Bradford County are 17% and 21%, respectively.



**Bailey Block - Towanda Borough CBD Property**

Table 1-3 – Percent Population Change By Decade 1950-2000  
 For Central Bradford County Municipalities and Bradford County

Source: U.S. Census Bureau

Municipality	% Change By Decade					% Change 1950-2000
	1990-2000	1980-90	1970-80	1960-70	1950-60	
North Towanda Twp.	2.0%	-9.4%	25.2%	20.6%	11.0%	55.0%
Towanda Boro.	-6.7%	-8.1%	-16.5%	-1.6%	5.5%	-25.7%
Towanda Twp.	-0.2%	-10.7%	18.0%	6.9%	4.4%	17.3%
Bradford County	2.9%	-3.1%	8.6%	5.5%	6.2%	21.3%

Table 1-4 – Municipal Population Profile 2000

For Central Bradford County Municipalities, Bradford County and Pennsylvania

Source: U.S. Census Bureau

Municipality	Population		% Change 1990-2000	Land Area (sq. mi)	Persons Per Square Mile	Median Age	% Age 65 & Over	Minority %
	1990	2000						
N. Towanda Twp.	909	927	2.0%	9.1	101.9	48.8	29.3%	1.8%
Towanda Borough	3242	3024	-6.7%	1.1	2749.1	37.8	16.6%	3.6%
Towanda Twp.	1133	1131	-0.2%	15.4	73.4	38.6	14.1%	1.1%
Bradford County	60967	62761	2.9%	1161	54.1	38.9	15.7%	2.1%
Pennsylvania			3.4%		265.1	38.0	15.6%	14.6%

Table 1-4 shows population characteristics for Bradford County and the Central Bradford region in relationship to the Commonwealth of Pennsylvania. Notable statistics include North Towanda's higher median age and population 65 years or older. Towanda Borough has a population density of nearly 2,750 persons per square mile. Other than North Towanda's age statistics, the Central Bradford region is similar to the County and Pennsylvania.



Table 1-5 – Municipal Age Profile

For Central Bradford County Municipalities, Bradford County and Pennsylvania

Source: U.S. Census Bureau

Municipality	Total Population			Median Age		Under Age 18			Age 65 & Over		
	1990	2000	% Change 1990-2000	1990	2000	1990	2000	% Change 1990-2000	1990	2000	% Change 1990-2000
N. Towanda Twp.	909	927	2.0%	43.1	48.8	203	186	-8.4%	237	272	14.8%
Towanda Boro.	3,242	3,024	-6.7%	34.5	37.8	788	758	-3.8%	500	501	0.2%
Towanda Twp.	1,133	1,131	-0.2%	34.3	38.6	293	287	-2.0%	123	160	30.1%
Bradford County	60,967	62,761	2.9%	34.6	38.9	16547	16022	-3.2%	8940	9865	10.3%
Pennsylvania				35.0	38			-4.6%			4.9%

Table 1-5 shows the upward trend in median age and the decline in the under age 18 category for the region. This is consistent with Bradford County and with Pennsylvania overall. However, Towanda Borough does not show the increase in senior citizens that is prevalent in the other jurisdictions.

Table 1-6 – Age Distribution 2000

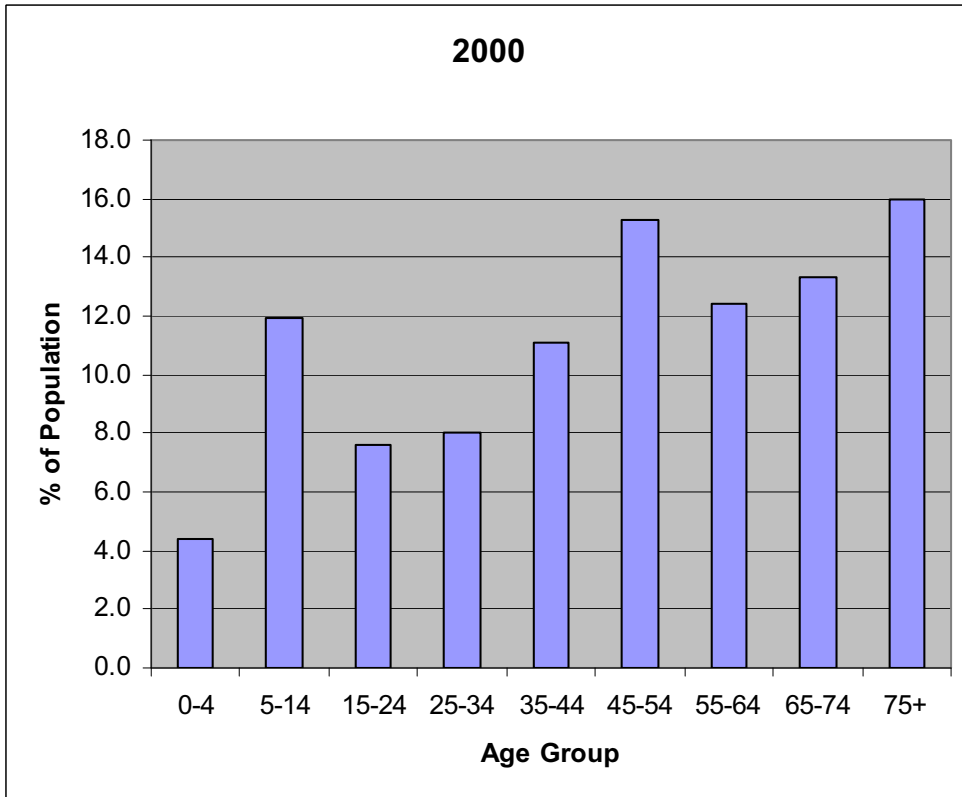
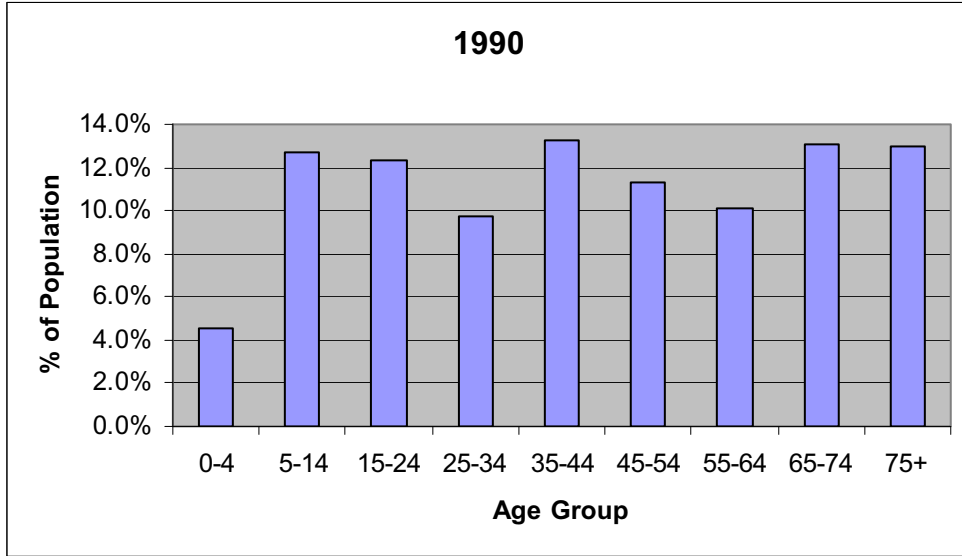
For Central Bradford County Municipalities, Bradford County and Pennsylvania

Source: U.S. Census Bureau

Municipality	Under 5	5 to 9	10 to 14	15 to 19	20 to 24	25 to 34	35 to 44	45 to 54	55 to 59	60 to 64	65 to 74	75 to 84	85 years and over
N. Towanda Twp.	41	54	56	44	26	74	103	142	63	52	123	93	56
Towanda Boro.	173	219	224	221	153	395	462	424	138	114	248	180	73
Towanda Twp.	61	83	82	93	41	138	190	164	69	50	91	56	13
Bradford County	3804	4440	4840	4413	2806	7379	9695	8898	3609	3012	5109	3551	1205

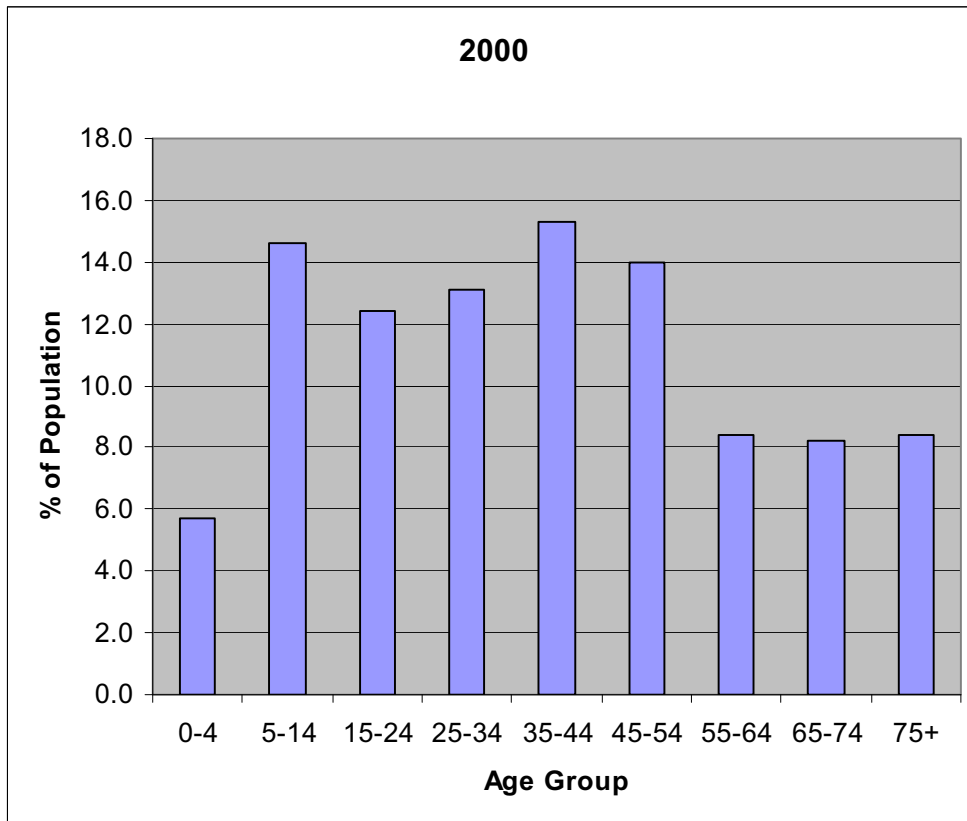
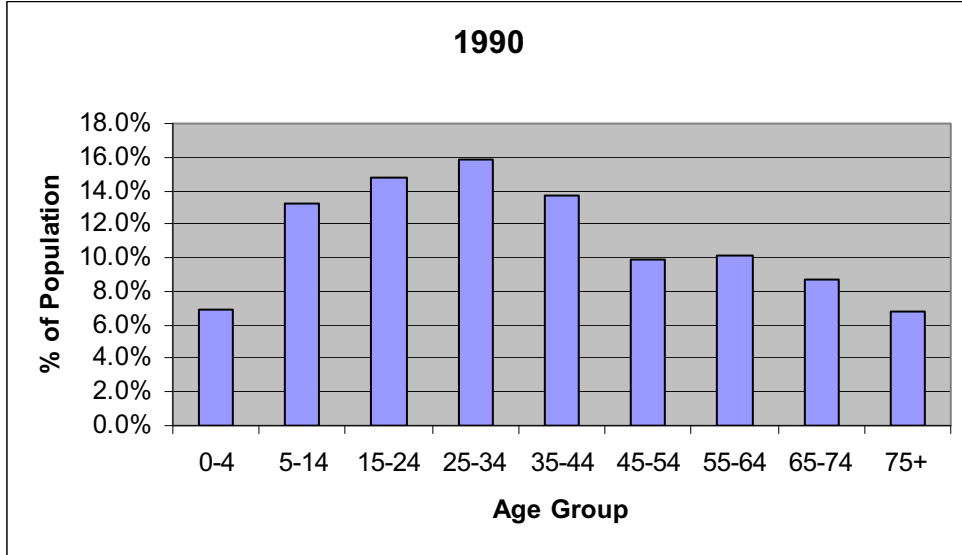
**Chart 1-6**  
**North Towanda Township Age Distribution 1990 & 2000**

Source: U.S. Census Bureau



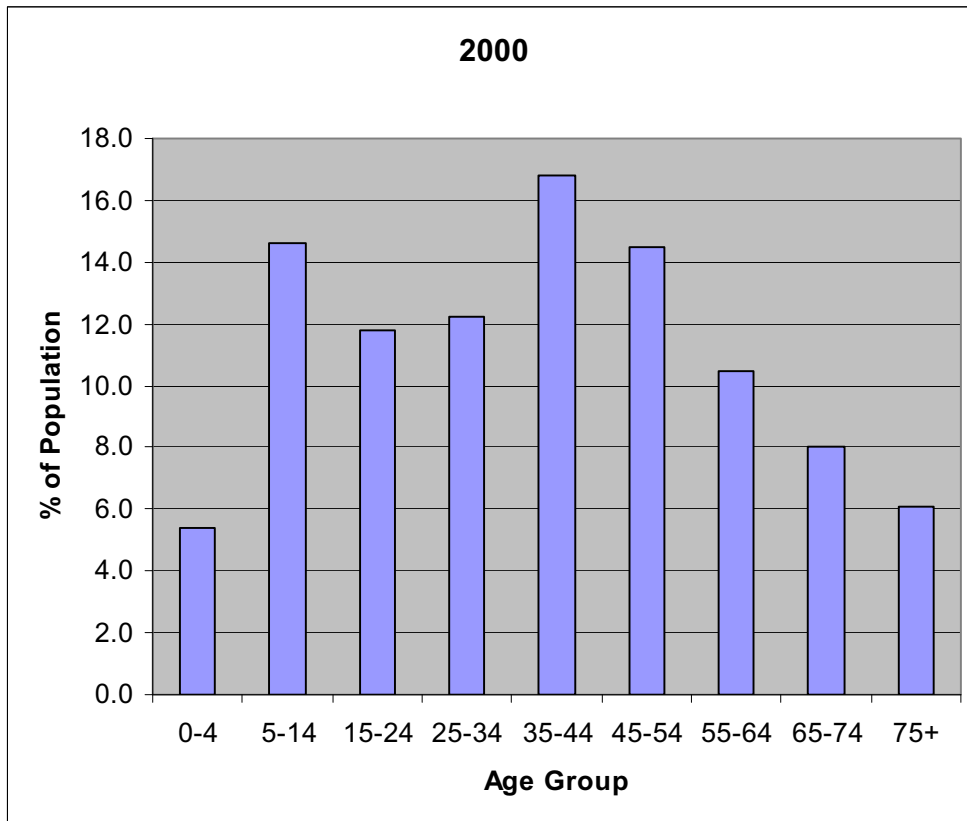
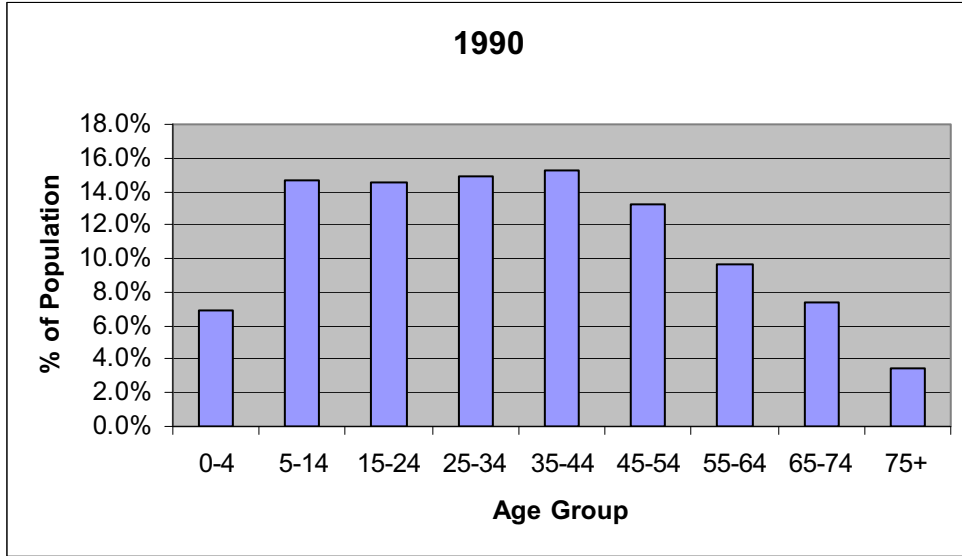
**Chart 1-7**  
**Towanda Borough Age Distribution 1990 & 2000**

Source: U.S. Census Bureau



**Chart 1-8  
Towanda Township Age Distribution 1990 & 2000**

Source: U.S. Census Bureau



### Chart 1-9

## Central Bradford Region Age Distribution 1990 & 2000

Source: U.S. Census Bureau

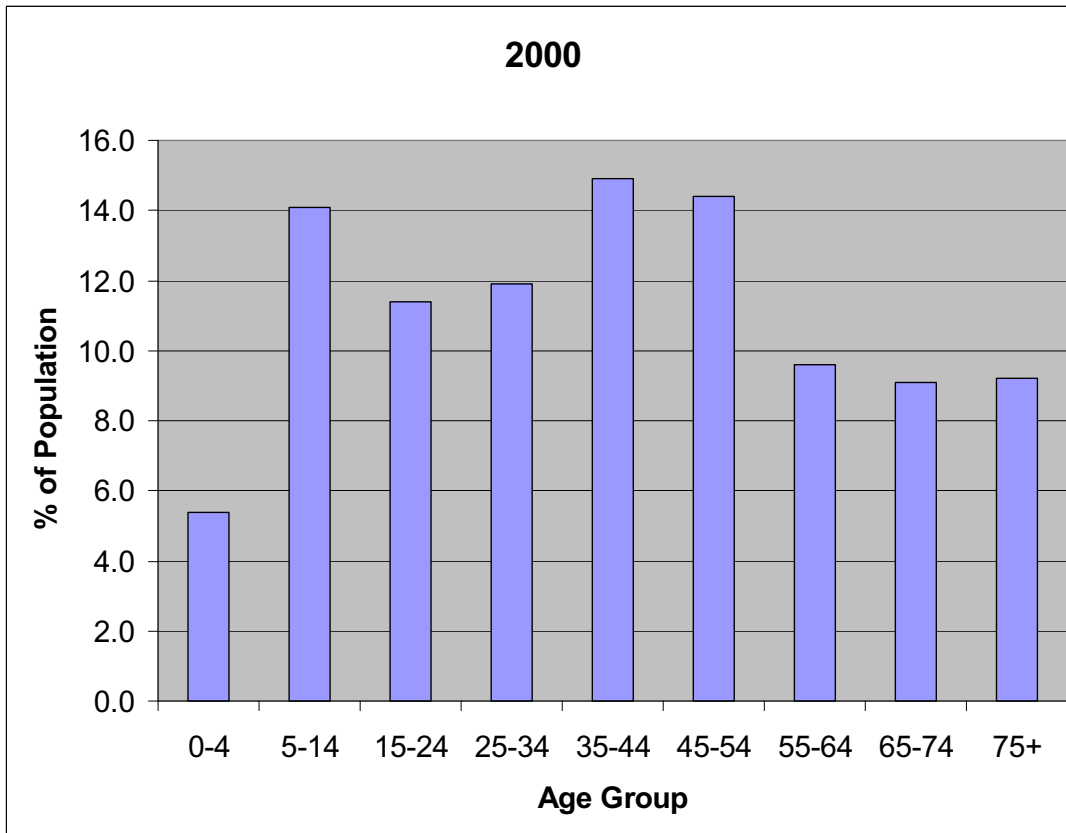
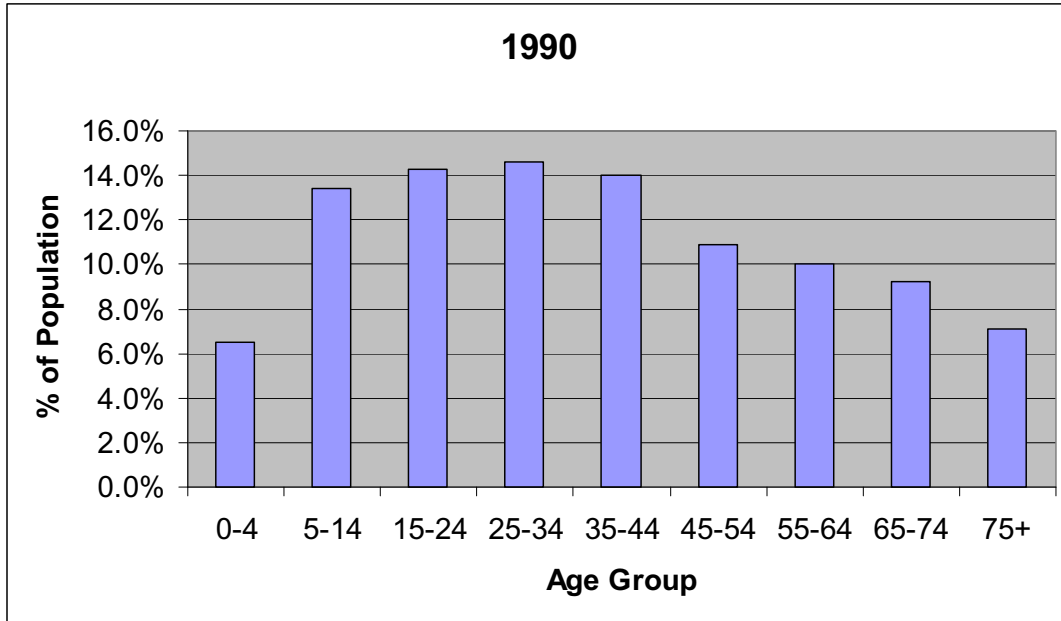


Table 1-6 and Charts 1-6, 1-7, 1-8 and 1-9 summarize the 1900 and 2000 age distributions for the region's municipalities and for the entire region. The 1990 charts for Towanda Borough and Towanda Township represent normal age distributions for a given population in that a fairly smooth curve results if a line is drawn across the tops of the age bars that decreases across the higher age brackets.

North Towanda Township - there is a deviation from a normal curve in two areas, 1) the age groups 65-74 and 75+ are much higher and 2) the age groups 15-24, 25-34 and 35-44 are lower than a normal curve. These trends are more exaggerated in the year 2000 portion of the chart.

Towanda Borough - there are two areas where the age groups are lower than a normal curve for the year 2000 chart only, 1) 15-24 and 25-34 and 2) 55-64 and 65-74.

Towanda Township - only the groupings 15-24 and 25-34 are lower than a normal smooth curve.

In conclusion the entire Central Bradford region is losing population in the post high school and young adult age groups. In addition, Towanda Borough is losing population in the retirement or near retirement age brackets. Alternatively, North Towanda Township has gained in the retirement brackets.

Table 1-7 - Race Distribution 1990-2000

For Central Bradford County Municipalities, Bradford County and Pennsylvania

Source: U.S. Census Bureau

Municipality	1990						2000					
	White	Black/ African Amer.	Amer. Indian Alaskan Native	Asian/ Pacific Islander	Other	% Non White	White	Black/ African Amer.	Amer. Indian Alaskan Native	Asian/ Pacific Islander	Other	% Non White
N. Towanda Twp.	899	4	0	6	0	1.1%	910	3	3	4	7	1.8%
Towanda Boro.	3,212	4	3	14	9	0.9%	2,914	26	11	36	37	3.6%
Towanda Twp.	1,128	5	0	0	0	0.4%	1,119	1	7	1	3	1.1%
Bradford County	60,409	149	117	214	78	0.9%	61,471	251	193	289	557	2.1%
Pennsylvania	11.5%						14.6%					

Table 1-7 reveals that there have been very modest increases in minority population in the region. Bradford County has increased from 0.9% (1980) to 2.1% (2000). The increases for the northeast municipalities are to a similar degree.

Population in Households (Table 1-8) includes all of those people who reside in housing units. In addition there are residents in group quarters living arrangements in all three municipalities. The category non-institutional group quarters includes group homes, college dormitories and military quarters. The category institutionalized group quarters includes correctional institutions, nursing homes and juvenile institutions where formal, authorized, supervised care or custody is provided.

Table 1-8 – Household and Group Quarter Population – 2000

For Central Bradford County Municipalities and Bradford County

Source: U.S. Census Bureau

Municipality	Total Population	Population In Households	Population In Group Quarters	% In Group Quarters	Institutionalized Population	Noninstitutional Population
N. Towanda Twp.	927	879	48	5.2%	48	0
Towanda Boro.	3,024	2,966	58	1.9%	49	9
Towanda Twp.	1,131	1,119	12	1.1%	0	12
Bradford County	62,761	61,721	1,040	1.7%	682	358

Table 1-9 shows the significant increase in housing units for Bradford County from 1970 to 2000. An increase of 46.9% or 9,147 units has been realized. The increase has been more modest in the Central Bradford region. Note that Towanda Borough has increased by 61 housing units between 1970 and 2000, although it lost 1,200 residents for the same period.

The variety of housing types for the region is detailed in Table 1-10. The two most prevalent types for Bradford County include single family or 1 unit detached (68%) and mobile home units (19%). The Central Bradford region, and especially Towanda Borough has a more diversified housing stock including a variety of sizes of multi-family units.

Table 1-9 – Total Housing Units 1970-2000

For Central Bradford County Municipalities, Bradford County and Pennsylvania

Source: U.S. Census Bureau

Municipality	Total Housing Units				Percent Increase		
	1970	1980	1990	2000	1990-2000	1970-2000	1980-2000
North Towanda Twp.	na	416	415	431	3.9%	na	3.6%
Towanda Boro.	1,398	1,456	1,464	1,459	-0.3%	4.4%	0.2%
Towanda Twp.	na	448	464	467	0.6%	na	4.2%
Bradford County	19,517	25,186	27,058	28,664	5.9%	46.9%	13.8%
Pennsylvania					6.3%		

Table 1-10 – Housing Unit Types – 2000

For Central Bradford County Municipalities and Bradford County

Source: U.S. Census Bureau

Municipality	Total Units	Type of Units - Number								
		1 Unit Detached	1 Unit Attached	2 Units	3-4 Units	5-9 Units	10-19 Units	20 or more Units	Mobile Homes	Other Housing
N. Towanda Twp.	431	261	2	3	6	0	0	106	50	3
Towanda Boro.	1459	825	50	225	225	103	7	5	19	0
Towanda Twp.	467	316	7	12	9	4	3	20	94	2
Bradford County	28664	19400	283	1383	937	366	162	652	5365	116

Table 1-11 shows the number of owner and renter occupied housing units in the County and the region. North Towanda Twp. and Towanda Borough show higher percentages of rental units than is found throughout the County. Bradford County has a 9% seasonal housing component, while the numbers are much lower for the Central Bradford region. Towanda Borough has a nearly 12% vacancy rate. This is a little higher than the 4 to 6% rate considered ideal for normal housing turnover.



Chart 1-10 portrays the trend in the percent of rental units of the total occupied housing units in the region. The Borough trend is upward while the townships are trending downward.

Table 1-11 – Housing Occupancy – 2000

For Central Bradford County Municipalities, Bradford County and Pennsylvania

Source: U.S. Census Bureau

Municipality	Total Housing Units	Occupied Housing					Vacant Non-Seasonal & Seasonal Units				
		Total	Owner Units		Renter Units		Total	Vacant N-S		Seasonal	
			Total	Percent	Total	Percent		Total	Percent	Total	Percent
North Towanda Twp.	431	402	253	62.9%	149	37.1%	29	18	4.2%	11	2.6%
Towanda Boro.	1459	1279	733	57.3%	546	42.7%	180	172	11.8%	8	0.5%
Towanda Twp.	467	432	330	76.4%	102	23.6%	35	26	5.6%	9	1.9%
Bradford County	28664	24453	18455	75.5%	5998	24.5%	4211	1003	3.5%	2620	9.1%
Pennsylvania				71.3%		28.7%					6.2%

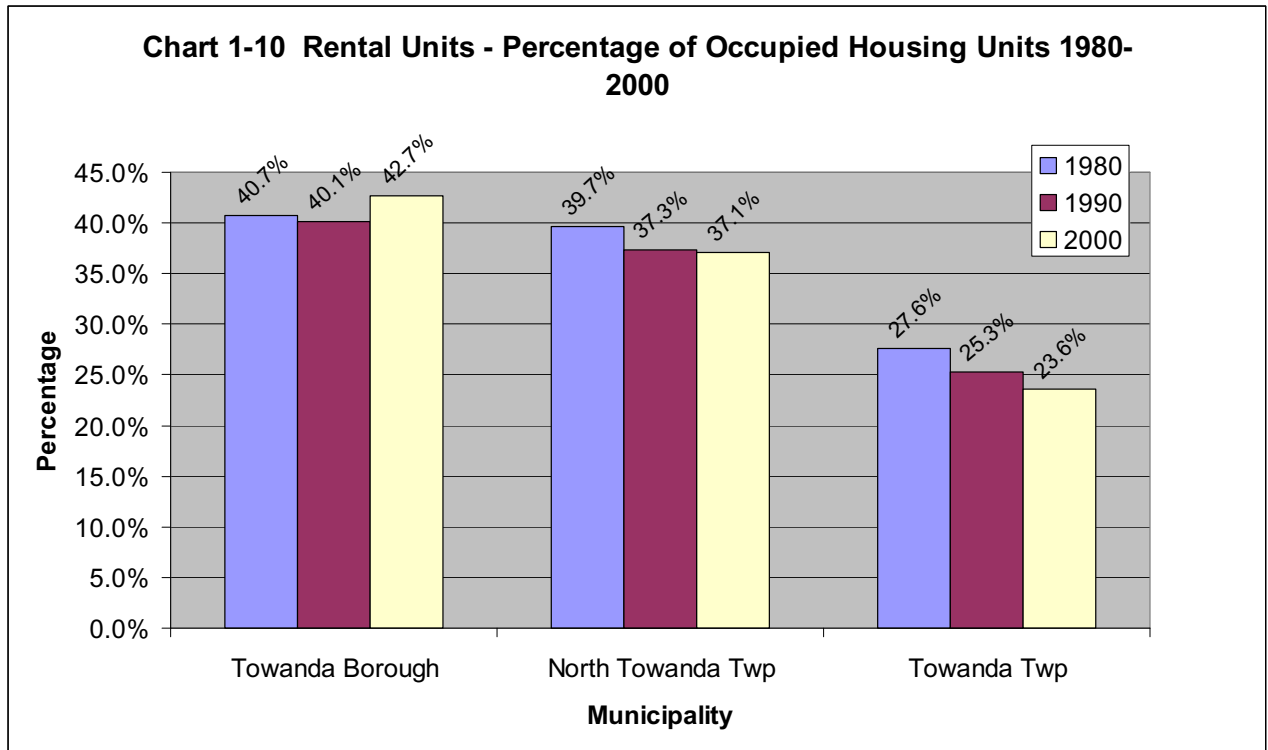


Table 1-12 – Population Per Household – 1970-2000

For Central Bradford County Municipalities, Bradford County and Pennsylvania

Source: U.S. Census Bureau

Municipality	Population In Households				Total Households				Population Per Household			
	1970	1980	1990	2000	1970	1980	1990	2000	1970	1980	1990	2000
N. Towanda Twp.	801	966	864	879	231	380	375	402	3.47	2.54	2.30	2.19
Towanda Boro.	4175	3511	3202	2966	1328	1321	1306	1279	3.14	2.66	2.45	2.32
Towanda Twp.	1063	1263	1133	1119	300	402	419	432	3.54	3.14	2.70	2.59
Bradford County	57245	62089	60086	61721	17193	21449	22492	24453	3.33	2.89	2.67	2.52
Pennsylvania										2.57		2.48

The reduction in household size that has occurred nationwide is also present in Bradford County and in the Central Bradford region (see Table 1-12). For example the household size for Bradford County has shrunk from 3.33 (1970) to 2.52 (2000). This decline in household size explains the modest increase in housing stock (+61) sustained by Towanda Borough while losing 1,200 residents between 1970 and 2000.

Table 1-13 – Age of Housing – 2000

For Central Bradford County Municipalities and Bradford County

Source: U.S. Census Bureau

Municipality	Total Housing Units	Year Structure Built							
		1939 or Earlier	1940-1959	1960-1969	1970-1979	1980-1989	1990-1994	1995-1998	1999-3/2000
N. Towanda Twp.	431	76	77	58	148	20	25	19	8
Towanda Boro.	1459	996	274	84	62	16	10	17	0
Towanda Twp.	467	138	51	34	93	87	26	32	6
Bradford County	28664	10929	3190	2461	5010	3458	1763	1419	434

Table 1-13 reflects that 38% of the housing stock in Bradford County was built prior to 1940. The second largest grouping for the County is 1970-79 (17%). For Towanda Borough 68% of the housing stock is pre-1940; an additional 19% was built between 1940 and 1959. Only 13% of the Borough's housing was built since 1960. The largest

grouping for North Towanda Township is 1970-79 (34%). Towanda Township is 30% pre-1940 with an additional 20% during 1970-79.

Table 1-14 – Value of Owner Occupied Housing – 2000

For Central Bradford County Municipalities, Bradford County and Pennsylvania

Source: U.S. Census Bureau

	Total Owner Occupied Units	\$ Value of Owner Occupied Units							Median Value
		Less Than \$50,000	50,000- \$99,000	100,000- \$149,000	150,000- \$199,000	200,000- \$299,000	300,000- \$499,000	\$500,000 or more	
North Towanda Twp.	172	10	80	51	21	4	6	0	\$96,700
Towanda Boro.	663	80	452	127	4	0	0	0	\$74,000
Towanda Twp.	189	38	104	28	9	8	2	0	\$77,400
Bradford County	10520	1972	6318	1538	315	274	87	16	\$73,900
Pennsylvania									\$97,000

Data concerning owner occupied housing values is presented in Table 1-14 above. North Towanda Township is well above the county median and on par with the Pennsylvania median value. Towanda Borough and Towanda Township are \$100 and \$3,500 above the County median respectively.

Education attainment is presented in Table 1-15. Towanda Borough has significantly higher educational attainment rates for both high school and the bachelor's degree. North Towanda and Towanda Townships are somewhat below Bradford County's high school graduate rate and on par for the bachelor's degree rate.

Table 1-15 – Educational Attainment – 2000

For Central Bradford County Municipalities, Bradford County and Pennsylvania

Source: U.S. Census Bureau

Municipality	Population 25 Years and Over								Percent	
	Total	Less Than 9th Grade	9th-12th Grade-No Diploma	High School Graduate	Some College No Degree	Associate Degree	Bachelor's Degree	Graduate or Professional Degree	High School Graduate or Higher	Bachelor's Degree or Higher
N. Towanda Twp.	704	55	120	272	88	64	67	38	75.1%	14.9%
Towanda Boro.	2018	57	162	821	272	151	336	219	89.1%	27.5%
Towanda Twp.	771	54	111	384	90	33	49	50	78.6%	12.8%
Bradford County	42428	2117	5643	20001	5822	2553	3776	2516	81.7%	14.8%
Pennsylvania									81.9%	22.4%

Marital status is presented for residents over age 15 in Table 1-15. Sixty percent of the residents in this age group are married in Bradford County. North Towanda Township is slightly above this rate, whereas Towanda Borough and Towanda Township are below the County's rate by 6.4% and 3.3% respectively.

Table 1-16 – Marital Status - 2000

For Central Bradford County Municipalities, Bradford County and Pennsylvania

Source: U.S. Census Bureau

Municipality	Marital Status - Population 15 Years and Over						
	Total	Never Married		Now Married, Except Separated		Separated	
		Number	Percent	Number	Percent	Number	Percent
N. Towanda Twp.	776	132	17.0%	467	60.2%	2	0.3%
Towanda Boro.	2412	544	22.6%	1293	53.6%	65	2.7%
Towanda Twp.	904	221	24.4%	513	56.7%	15	1.7%
Bradford County	49662	10339	20.8%	29805	60.0%	971	2.0%
Pennsylvania			27.2%		54.3%		2.2%

Table 1-16 con't – Marital Status - 2000

For Central Bradford County Municipalities, Bradford County and Pennsylvania

Source: U.S. Census Bureau

Municipality	Marital Status - Population 15 Years and Over							
	Widowed		Widowed- Female		Divorced		Divorced - Female	
	Number	Percent	Number	Percent	Number	Percent	Number	Percent
North Towanda Twp.	123	15.9%	99	12.8%	52	6.7%	31	4.0%
Towanda Boro.	208	8.6%	195	8.1%	302	12.5%	169	7.0%
Towanda Twp.	56	6.2%	46	5.1%	99	11.0%	56	6.2%
Bradford County	3729	7.5%	3001	6.0%	4818	9.7%	2638	5.3%
Pennsylvania		8.2%		6.7%		8.1%		4.6%

Table 1-17 – Civilian Labor Force – 2000

For Central Bradford County Municipalities, Bradford County and Pennsylvania

Source: U.S. Census Bureau

Municipality	Employed Civilian Occupation Age 16 and Over	Type of Occupation					
		Management, Professional and Related Occupations		Service Occupations		Sales and Office Occupations	
		Number	Percent	Number	Percent	Number	Percent
N. Towanda Twp.	346	120	34.7%	50	14.5%	54	15.6%
Towanda Boro.	1380	497	36.0%	169	12.2%	318	23.0%
Towanda Twp.	522	115	22.0%	74	14.2%	98	18.8%
Bradford County	27985	7712	27.6%	3848	13.8%	5745	20.5%
Pennsylvania			32.6%		14.8%		27.0%

Table 1-17 con't – Civilian Labor Force – 2000

For Central Bradford County Municipalities, Bradford County and Pennsylvania

Source: U.S. Census Bureau

Municipality	Type of Occupation					
	Farming, Fishing and Forestry		Construction, Extraction and Maintenance		Production, Transportation & Material Moving	
	Number	Percent	Number	Percent	Number	Percent
N. Towanda Twp.	7	2.0%	34	9.8%	81	23.4%
Towanda Boro.	12	0.9%	71	5.1%	313	22.7%
Towanda Twp.	3	0.6%	72	13.8%	160	30.7%
Bradford County	634	2.3%	2793	10.0%	7253	25.9%
Pennsylvania		0.5%		8.9%		16.3%

Table 1-17 presents data on the residency of the civilian labor force over age 16. The labor force segments for Bradford County include:

- Management, Professional and Related (27.6%)
- Production, Transportation and Material Moving (25.9%)
- Sales and Office Occupations (20.5%)
- Service Occupations (13.8%)
- Construction, Mining and Maintenance (10.0%)
- Farming and Forestry (2.3%).

The labor force distribution for the region is similar to the county as a whole.

Table 1-18 – Household Income Profile – 2000

For Central Bradford County Municipalities, Bradford County and Pennsylvania

Source: U.S. Census Bureau

Municipality	Total Households	Number of Households				
		Less Than \$10,000	\$10,000 to \$14,999	\$15,000 to \$24,999	\$25,000 to \$34,999	\$35,000 to \$49,999
N. Towanda Twp.	405	75	52	35	51	43
Towanda Boro.	1278	146	97	198	184	279
Towanda Twp.	427	50	17	66	63	96
Bradford County Pennsylvania	24427	2416	1936	3925	3921	4724

Table 1-18 con't – Household Income Profile – 2000

For Central Bradford County Municipalities, Bradford County and Pennsylvania

Source: U.S. Census Bureau

Municipality	Number of Households					Median Household Income
	\$50,000 to \$74,999	\$75,000 to \$99,000	\$100,000 to \$149,999	\$150,000 to \$199,999	\$200,000 or more	
N. Towanda Twp.	63	39	26	14	7	\$31,641
Towanda Boro.	230	82	46	16	0	\$35,814
Towanda Twp.	59	43	23	10	0	\$36,326
Bradford County Pennsylvania	4482	1683	900	232	208	\$35,038 \$40,106

Median household incomes in the Central Bradford region are slightly higher than the County overall, with the exception of North Towanda Township (Table 1-18). The median household income for North Towanda Township is nearly \$3,400 less than the County.

Table 1-19 – Family Income Profile – 2000

For Central Bradford County Municipalities, Bradford County and Pennsylvania

Source: U.S. Census Bureau

Municipality	Total Families	Number of Families				
		Less Than \$10,000	\$10,000 to \$14,999	\$15,000 to \$24,999	\$25,000 to \$34,999	\$35,000 to \$49,999
North Towanda Twp.	245	11	12	17	37	37
Towanda Boro.	794	55	27	74	135	179
Towanda Twp.	324	43	6	40	38	77
Bradford County	17309	1020	782	2471	2775	3654
Pennsylvania						

Table 1-19 con't – Family Income Profile – 2000

For Central Bradford County Municipalities, Bradford County and Pennsylvania

Source: U.S. Census Bureau

Municipality	Number of Families					Median Family Income
	\$50,000-\$74,999	\$75,000-\$99,000	\$100,000-\$149,999	\$150,000-\$199,999	\$200,000 or more	
North Towanda Twp.	55	37	24	10	5	\$53,375
Towanda Boro.	196	66	46	16	0	\$41,884
Towanda Twp.	52	35	23	10	0	\$40,278
Bradford County	3903	1499	808	205	192	\$40,664
Pennsylvania						\$49,184

Median family incomes (Table 1-19) in the Central Bradford region are on par or slightly higher than the County overall, with the exception of North Towanda Township which is significantly higher. The median family income for North Towanda Township is \$12,700 higher than the County and nearly \$4,200 higher than for Pennsylvania. Table 1-20 summarizes median household, family and per capita incomes. A possible explanation for the low median value for household income and higher family and per capita incomes for North Towanda Township is the presence of a disproportional number of single person households in the Township.



Table 1-20 – Summary Income Profile 2000

For Central Bradford County Municipalities, Bradford County and Pennsylvania

Source: U.S. Census Bureau

Municipality	Median Household Income	Median Family Income	Per Capita Income
North Towanda Twp	\$31,641	\$53,375	\$22,494
Towanda Borough	\$35,814	\$41,884	\$17,438
Towanda Township	\$36,326	\$40,278	\$17,164
Bradford County	\$35,038	\$40,664	\$17,148
Pennsylvania	\$40,106	\$49,184	\$20,880